

Novidades 6.5

- ▶ Domino Server 6.5
- ▶ Domino Designer 6.5
- ▶ Notes 6.5
- ▶ Domino Web Access
- ▶ Lotus Enterprise Integrator (LEI)



Domino Server 6.5

▶ Novas Plataformas

- ▶ Domino 6.5 support the Linux on zSeries (S390)
- ▶ Windows Server 2003 platforms.
- ▶ Domino 6.5 support for the Mozilla 1.3.1



Domino Server 6.5

▶ Melhorias

- ▶ Novos recursos Cleanup Scripts
- ▶ Free-running Memcheck : Valida a estrutura de dados do server usando a memória.
- ▶ Log Name/ThreadID do HTTP
- ▶ Verificação dos dados durante o Startup para saber das mudanças do Server ou Client
- ▶ Novas estatísticas para o Linux
- ▶ Replicate unread marks



Domino Server 6.5

▶ Single sign-on enhancements

- ▶ The Domino 6.5 Web Server caches Internet password para single sign-on users.
- ▶ Você pode agora configurar o SSO timeout e também apresentar prompt para colocar a senha novamente.

▶ Domino for iSeries

- ▶ Supporta múltiplas versões do Domino

▶ Domino for z/OS

- ▶ Domino 6.5 for z/OS utiliza criptografia de hardware para reduzir atividade da CPU durante SSL com Domino Web Access.



Designer 6.5

- ▶ **Instant messaging support**
- ▶ **Melhoria no LotusScript** : Novas Classes, métodos e propriedades estão agora disponíveis em Java/CORBA e COM : AdministrationProcess, ColorObject, DxlExporter, DxlImporter, NoteCollection, ReplicationEntry, RichTextDocLink, RichTextNavigator, RichTextRange, RichTextSelection, and RichTextTable.
- ▶ **Novo Lotus Domino Toolkit for WebSphere Studio 1.1**: para a criação de JavaServer Pages (JSPs) usando Domino e WebSphere Studio 5.0.1 and 5.1.



Notes 6.5

▶ Mail, Calendar e Scheduling:

- ▶ Possibilidade para adicionar "Time" na coluna "Date" do Inbox
- ▶ QuickRules para gerenciar Junk Mail (Spam)
- ▶ Follow-up no email : Permite marcar um email com flag icon e desmarcar quando completar o FUP "to-be-followed-up-on". Permite ordenar as visões pelo FUP.

▶ Notes Client

- ▶ Integração com Sametime
- ▶ Permite View Export para CSV format
- ▶ Novo Workplace Welcome Page



Domino Web Access

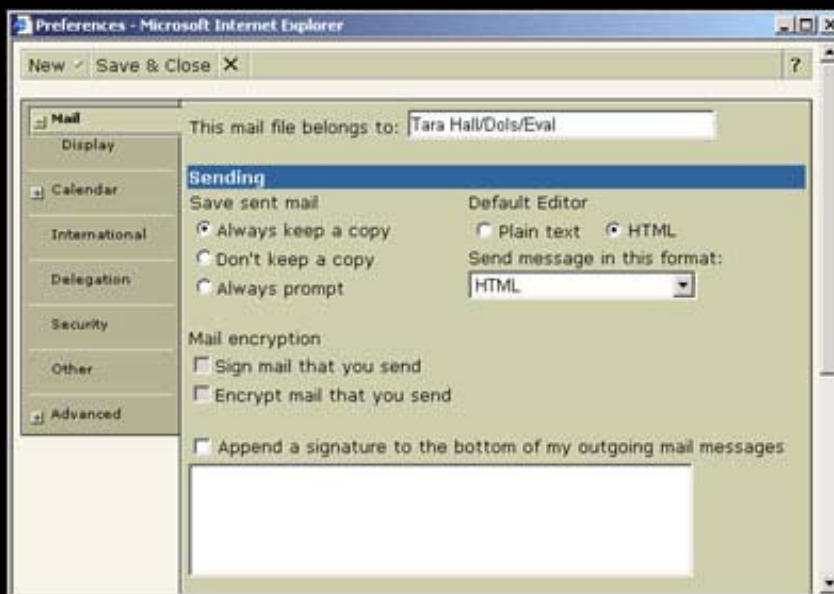
▶ Mail :

- ▶ Permite copiar mensagens para calendar ou To Do
- ▶ Enviar e Salvar mensagens em folder com apenas um clique
- ▶ Permite criar page breaks
- ▶ Adicionar pessoas para seus contatos
- ▶ Visualizar somente unread mail
- ▶ Abrir novas janelas: Welcome page, Mail, Calendar, To do list, Contacts, ou Notebook



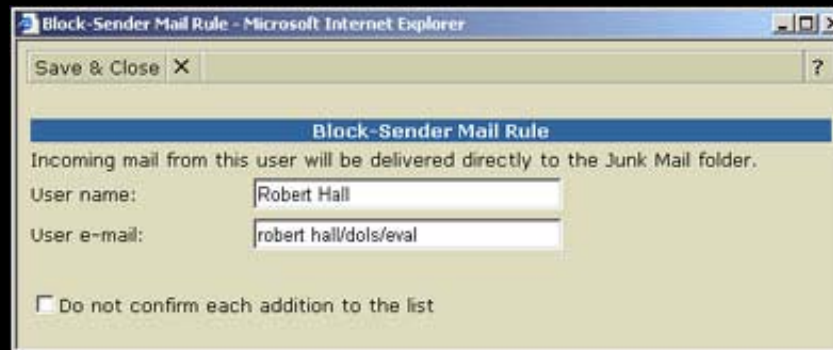
Domino Web Access

- ▶ Mail :
 - ▶ Criptografia de email messages



Domino Web Access

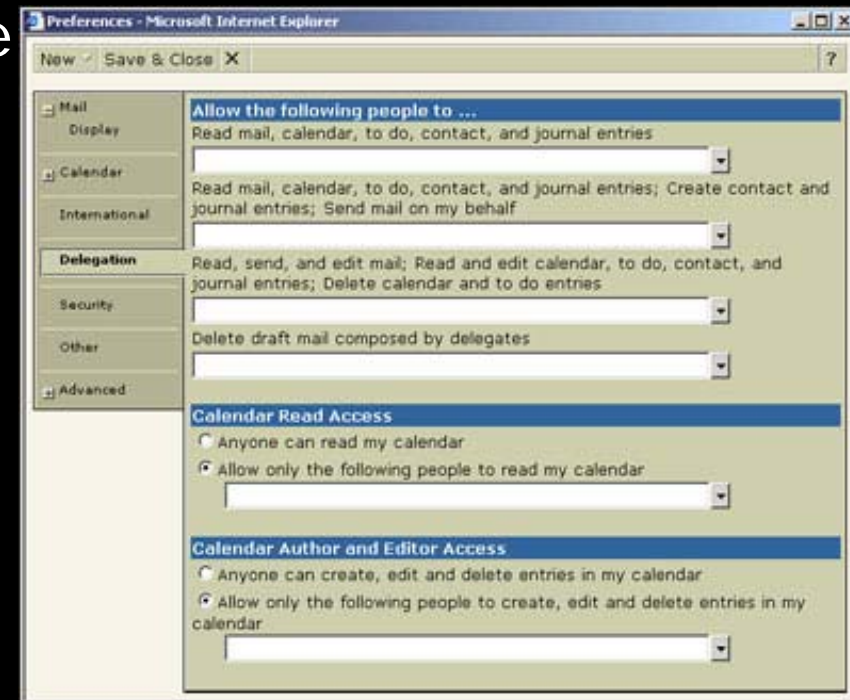
- ▶ Mail :
 - ▶ Arquivar/Salvar localmente
 - ▶ "Reply with history" usando usando Internet-style
 - ▶ Marcar FUP
 - ▶ "Block mail from sender"



Domino Web Access

▶ Calendar and scheduling

- ▶ Customize your Welcome page with more Calendar options
- ▶ Pencil in meetings: Any one with access to your calendar can view the details of a penciled in entry for free search.
- ▶ Specify more than one time zone
- ▶ Delegate your calendar
- ▶ Create a Group TODOs



Domino Web Access

▶ Print changes :

- ▶ Select multiple documents from a view for printing
- ▶ Select a view and print its contents
- ▶ Select entries in your Contact view and print them in summarized or detailed form
- ▶ Print a document while in edit mode



Domino Web Access

- ▶ **Template Customization :**
 - ▶ You can : Create action buttons, views, dialog boxes, modify subforms, Welcome Page and substitute the logo.



Domino Web Access

► Lotus Instant Messaging integration

The screenshot displays the Lotus Domino Web Access interface in a Mozilla browser window. The main window shows an email inbox with a table of messages. A secondary window titled 'Instant messaging - Chat - Mozilla' is open, showing a contact list with 'Ilan Stuart' selected.

Mail - Mozilla

File Edit View Go Bookmarks Tools Window Help

Lotus Domino™ Web Access

Welcome Mail Calendar To Do Contacts Notebook

Inbox Gerald Brett

	Who	Date	Time	Size
✓	Edith Monroe	10/24/2003	11:43AM	4889
•	InstantCash.com	10/24/2003	11:22AM	517
•	Jane Rogers	10/24/2003	10:17AM	536
✓	Edith Monroe	10/21/2003	03:21PM	16400
✓	Ilan Stuart	10/21/2003	02:16PM	3772
✓	Ilan Stuart	10/21/2003	01:51PM	2344
✓	Ilan Stuart	10/21/2003	01:37PM	1094
✓	Billy Lemieux	10/21/2003	12:08PM	956
✓	Edith Monroe	10/21/2003	11:49AM	1581
✓	Ilan Stuart	10/16/2003	10:31AM	13110
✓	Ilan Stuart	10/16/2003	10:18AM	518
✓	Edith Monroe	10/15/2003	03:40PM	2712
•	Lotus SE	10/14/2003	05:14AM	2577
•	Lotus SE	10/14/2003	05:14AM	1488

Instant messaging - Chat - Mozilla

New Group... Save & Close X ?

User name: Directory...

Add Remove

- Work
 - Billy Lemieux
 - Edith Monroe
 - Ilan Stuart
 - Jane Rogers
 - Jim Smith
- HQ
- Partners

Domino Mail Server Upgrade Important! - Please reply



Domino Web Access

- ▶ **Support for Mozilla 1.3.1 on Linux**
 - ▶ Domino Web Access 6.5 support the Mozilla 1.3.1 browser on Red Hat Linux 7.2 or 8.0 and on SuSE 8.0 (United Linux).



Domino Web Access

▶ New administrative features

- ▶ WebMail Redirect
- ▶ Server-side caching and compression for improved performance (70% menos banda e 35% menos tempo de resposta)
- ▶ Domino Off-Line Services (DOLS) replication setting enhancement : You can also filter replication to not allow replication of attachments.



Lotus Enterprise Integrator (LEI)

▶ Latest features

- ▶ Reader Access protection for LEI Connection documents
- ▶ New platform support : LEI 6.5 supports Linux Red Hat 7.2, United Linux 1.0, Windows 2003, and Sun Solaris 9i.
- ▶ Support for multiple partitions of a partitioned Domino server
- ▶ ODBC Connector for iSeries
- ▶ LEI 6.5 provides faster initial view index builds and faster view index rebuilds for DB2 and Oracle.
- ▶ DataDirect 4.2 ODBC Drivers : for use with Notes, Domino, and LEI. Version 4.2 includes DataDirect's wire protocol ODBC drivers and support for MySQL and XML.

